

REVISIONS				
REV	ZONE	DESCRIPTION	DATE	APPROVED
1	1A	ADDED NOTE 1 REGARDING UNION.	09/24/13	S.P.

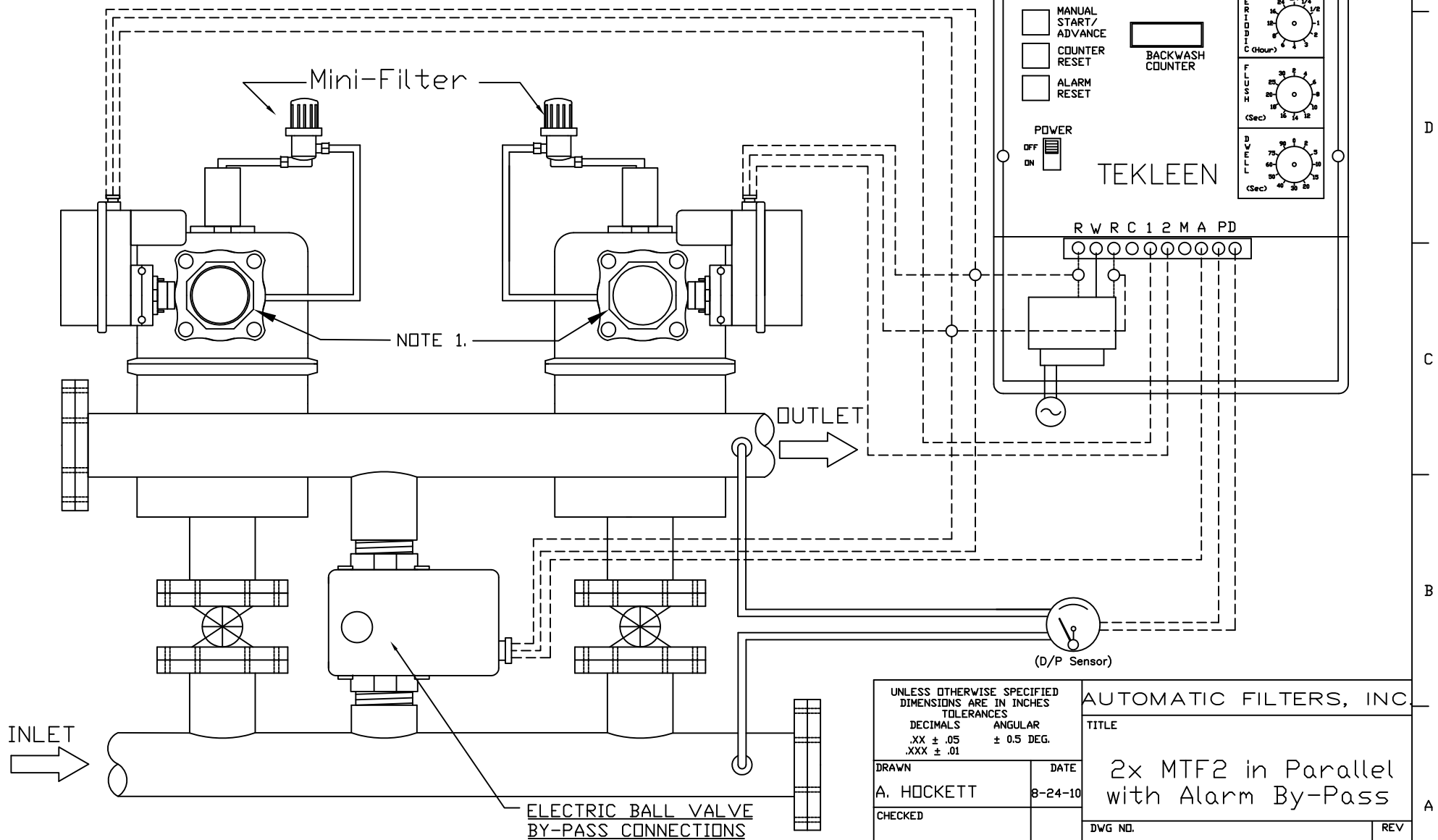
Valve #1 Connections:

Red: R (Left)
 Black: R (Right)
 White: 1

Valve #2 Connections:

Red: R (Left)
 Black: R (Right)
 White: 2

GB7 ELECTRIC CONTROLLER



NOTES:
 1. IT IS RECOMMENDED THAT A UNION BE INSTALLED BETWEEN THE FLUSH VALVE AND FLUSH LINE FOR EASE OF MAINTENANCE.

ELECTRIC BALL VALVE BY-PASS CONNECTIONS
 RED: R (Left)
 BLACK: R (Right)
 WHITE: A

UNLESS OTHERWISE SPECIFIED DIMENSIONS ARE IN INCHES TOLERANCES		AUTOMATIC FILTERS, INC	
DECIMALS .XX ± .05 .XXX ± .01	ANGULAR ± 0.5 DEG.	TITLE	
DRAWN A. HOCKETT	DATE 8-24-10	2x MTF2 in Parallel with Alarm By-Pass	
CHECKED		DWG. NO. WIRE-2MTFGB7-LAY-02	REV 1
DESIGN FOR:		NOT TO SCALE	SHEET 1 OF 1